



PUPIL PLACE PLAN

2016 - 2020

Table of Contents

INTRODUCTION.....	3
SCHOOL PLACE PLANNING	4
CONTEXT	5
SCHOOLS AND PLANNING AREAS.....	8
PRIMARY FORECASTS	11
SECONDARY FORECASTS.....	22
AUTHORITY WIDE ISSUES	29
ANNEX 1: PUPIL PLACE FORECASTING METHODOLOGY	30
ANNEX 2: SPECIAL AND ADDITIONAL NEEDS	32
ANNEX 3: PROVISION FOR PUPILS OUT OF SCHOOL	34
ANNEX 4: POST 16 PROVISION	35
ANNEX 5: MAP PRIMARY PHASE PLANNING AREAS	37
ANNEX 6: MAP SECONDARY PHASE PLANNING AREAS	38
ANNEX 7: PRIMARY FORECAST WHOLE SCHOOL.....	40
ANNEX 8: PRIMARY FORECAST RECEPTION	42
ANNEX 9: SECONDARY FORECAST WHOLE SCHOOL.....	44
ANNEX 10: SECONDARY FORECAST YEAR 7	45

**For the purpose of this document, data has been extracted from the
Autumn 2015 Census**

INTRODUCTION

Welcome to the third edition of the Pupil Place Planning (PPP) document. To date the publication of this document has been welcomed and widely used by stakeholders such as developers, schools and academies and many others. The forecasts contained in this document are also used to inform the schools capital programme and to date we have delivered high quality projects that contributes to ensuring the delivery of good educational outcomes for the children of Thurrock.

Having this data has allowed us to review trend data on pupil numbers which helps with future forecasting. Thurrock continues to be a place of choice for families wishing to move into the area and this can be seen from the numbers of children requiring a school place.

We are very fortunate in Thurrock to have built strong working relationships with our schools and academies and this allows us to work in partnership with them when identifying locations where we can build in additional capacity for schools places. The Authority has arranged for a sub group of the Schools' Forum to be set up so that we can work closely with this group in reviewing data and options. This allows for total openness and transparency with decisions that are made when meeting the demand for additional places. This group has worked effectively over the last twelve months and has been welcomed by stakeholders. This has further strengthened the partnership working we have in place with our schools and academies.

It is hoped that this document continues to be of interest to all stakeholders and that the content is both useful and clear.

SCHOOL PLACE PLANNING

Over the last 4 years we have seen a steep increase in the primary population and these numbers are not subsiding and continue to increase. These numbers have risen by 29% in Thurrock schools. This edition identifies the pupil increase we have been experiencing over the last few years now feeding in to our secondary provision. This is a major issue going forward as we now need to increase secondary capacity. Officers have been in dialogue with the DfE with regards this issue and will be working with prospective sponsors to meet this demand.

The PPP document covers education for children in the age range of 4 – 16. Post 16 provision information is contained in Annex4.

Special and Additional Needs Educational provision and Early Years and Childcare provision are undertaken by another specialist area within Thurrock Council and are not covered in this document.

Thurrock Council has a legal obligation to provide a school place for every child of school age who live in the borough. PPP is a difficult art and can never be an exact science. Planning for school places begins with the acquisition of birth data which identifies the number of children that are born and the post code they live in and it is assumed that 4 years later they will enter the school system in a local school. There are a number of factors that are forever changing and need to be considered. In-year admissions, where children come into the Authority mid-year (outside the normal admission rounds) is very difficult to foresee and project. Numbers of children that have moved in to Thurrock from elsewhere in the country and those that have moved in from other countries can be seen on page 29.

Thurrock's forecasting for school places to date has been robust and accurate with a 0.3% difference between forecasts and actual numbers admitted for September 2015. The difficulty with forecasting is that although forecasts are accurate we are not able to identify how old the children will be that move into the Authority and to what year group they will move into. This takes close monitoring and we need to be in a position at times to take swift action in opening up classes within certain year groups. Every effort is made to seek and offer a school place within reasonable travelling distance from the pupil's home.

Work is currently being commissioned to review the methodology of the calculation of child yield from new Housing developments within Thurrock. It is hoped that more up-to-date and robust formulae can be found to enable Thurrock to project the number of pupils produced from any given development. Thurrock currently does not project any child yield from a one bedroomed flat but the current economic climate suggest that this is not so. One other issue that has arisen, when working with our Awards and Benefits team, is that evidence reveals that families are moving in with other families within existing dwellings making it difficult for Thurrock Council to predict demand at local school level.

CONTEXT

Thurrock is located on the north bank of the river Thames, twenty miles east of central London and has 18 miles of river front. More than half of the land in Thurrock is designated Green Belt land.

Thurrock boasts a 21st century, forward-looking council, using modern management methods, leading an empowered workforce to deliver entrepreneurial services with all our partners to all of our communities. It is a place of opportunity, enterprise and excellence, where individuals, communities and businesses flourish. There are many exciting projects to be proud of, such as:-

- Thames Enterprise Port - providing 12,000 jobs with a £1.5 billion investment
- Thames Nature Park
- Development of Tilbury - providing 1,000 homes, 3,800 jobs and a £800 million investment
- Development of Grays – providing 4,500 homes, 1,600 jobs and a £650 million investment
- Development of Purfleet – providing 2,500 homes and a media centre, 2,800 jobs and a £1.5 billion investment
- Development Lakeside/Thurrock – providing 6,000 homes, 9,000 jobs and a £1.15 billion investment
- Improvements to the M25 at junctions 30/31
- High House Production Park - 250 jobs and a £65million investment
- RSPB Rainham Marshes

Thurrock's population is 163,270, having grown by 11% in the last 10 years. Thurrock has a young population by national standards. There are 42,154 children aged 0-18 years (25.8% of population) and 12,372 children are aged 0-4 years (7.6% of population). The number of 0 -19 year olds in Thurrock is set to increase to 50,500 by 2037. The distribution of children under 15 years of age is centred in the south of the borough in Tilbury, Chafford, North Stifford, West Thurrock and parts of Ockendon.

The population is increasingly diverse. According to the 2011 census BME population was 15.7% – a significant increase from the 2001 census of 4.7%. Among school-age children, over one in four (26.5%) are from a black and minority ethnic group. The latest available data (2012) indicates that Thurrock may have a slightly higher population of Gypsy, Roma and Traveller children than the national average (0.3% compared to 0.2%).

Thurrock's Community Strategy lays out the long-term vision and priorities for Thurrock. There are five priorities which are reflected in the council's Corporate Plan

and Medium Term Financial Strategy, as well as service strategies and plans. The five priorities which have cross-party political support are:

- Create a great place for learning and opportunity;
- Encourage and promote job creation and economic prosperity;
- Build pride, responsibility and respect to create safer communities;
- Improve health and well-being;
- Promote and protect our clean and green environment;

Much of the riverside area of Thurrock is highly urbanised with a mixture of industrial and residential development at the west and eastern ends of the Authority. The Authority is characterised by five main urban communities plus a large rural area containing five main villages. The urban communities are:

- Grays and the adjacent Chafford Hundred
- West Thurrock and Purfleet
- Stanford-Le-Hope and Corringham
- Tilbury and Chadwell St Mary
- Aveley and Ockendon

The schools planning areas are different to the above and are listed on pages 9 & 10.

Thurrock also boasts a large retail park at Lakeside.

South Essex College opened in September 2014. The new £45 million Thurrock Campus is a state-of-the-art facility, located on Grays High Street in the heart of the town centre, with teaching facilities second to none, with specially designed workshops for construction and engineering, as well as art & design.

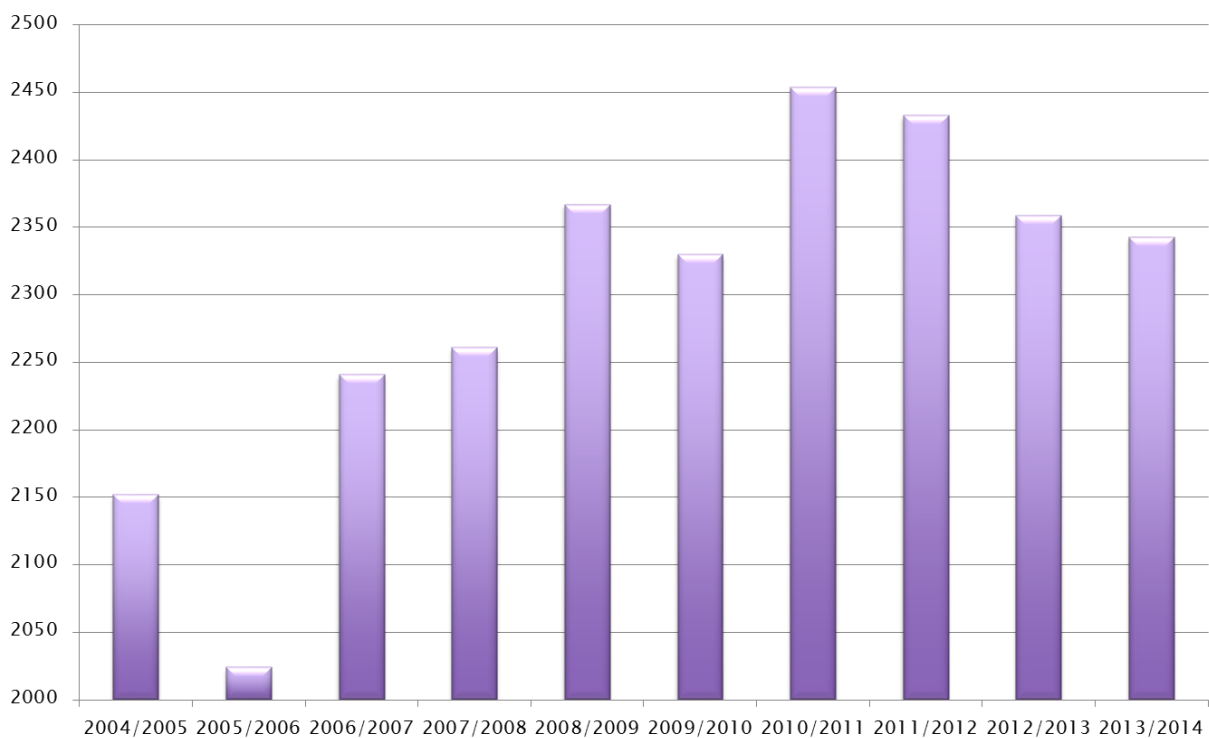
The residents of Thurrock benefit from good transport links. The M25 passes through the local authority area as does the A13 trunk road from London to Southend. There are also 7 railway stations in Thurrock on the line which connects Southend and Fenchurch Street in central London.

The table below demonstrates the conversion of live births in Thurrock to the actual take up of school places. This data enables Thurrock to project the place requirements for future years using the birth data available.

Year of Birth	2003-04	2004-05	2005-06	2006-07	2007-08	2008-09	2009-10	2010-11
Number of live births in the authority	1,938	2,152	2,024	2,241	2,261	2,367	2,330	2,454
Year entering school at 4+	2008-09	2009-10	2010-11	2011-12	2012-13	2013-14	2014-15	2015-16
Number of children admitted into reception	1,709	1,844	1,884	2,237	2,263	2,321	2,277	2,430
Historical uptake factor	88.18%	85.69%	93.08%	99.82%	100.09%	98.06%	97.73%	99.02%

The graph below highlights that Thurrock's live births reached a peak in 2010/11 which was the September 2015 intake in reception.

BIRTH DATA OVER LAST TEN YEARS



SCHOOLS AND PLANNING AREAS

Schools

There are currently 39 state maintained primary schools in Thurrock and 10 state maintained secondary schools as detailed in the table below:-

	Academies	Community	Voluntary	Voluntary	Foundation	Free
		Schools	Aided Schools	Controlled		School
Primary Schools	23	7	5	1	1	2
Secondary Schools	9	0	1	0	0	0

Full details of the schools and the oversubscription criteria applied to each one is available in the Council's Admissions Book. This publication also contains information on making an application for a school place and can be accessed on the Council's website.

Each Academy, Free School and Voluntary Aided-School is its own Admissions Authority. The Council is the Admissions Authority for Community Schools and Voluntary Controlled Schools. In respect of Voluntary Aided Schools the governing body of the school determines admission arrangements. For Academies and Free Schools, the relevant Academy Trust is the Admission Authority. Each individual Admissions Authority applies its own oversubscription criteria to applications and determines which applicants to offer places to.

Applications for all state funded secondary schools in Thurrock are made via the co-ordinated admissions process which is administered by the Council.

PUPIL PLACE PLANNING AREAS

Thurrock Council has 8 schools planning areas, five for primary and 3 for secondary.

The Primary planning areas are detailed in the table below:-

Primary Planning Areas

<p style="text-align: center;">Aveley, Ockendon and Purfleet</p> <ul style="list-style-type: none"> • Aveley Primary • Benyon Primary • Bonnygate Primary • Dilkes Academy • Holy Cross Catholic Primary • Kenningtons Primary Academy • Purfleet Primary Academy • Shaw Primary Academy • Somers Heath Primary 	<p style="text-align: center;">Grays</p> <ul style="list-style-type: none"> • Belmont Castle Academy • Deneholm Primary • Harris Primary Academy Chafford Hundred • Harris Primary Academy Mayflower • Little Thurrock Primary • Quarry Hill Academy • St Thomas of Canterbury Catholic Primary • Stifford Clays Primary • Thameside Primary • Tudor Court Primary • Warren Primary • West Thurrock Academy
<p style="text-align: center;">Tilbury</p> <ul style="list-style-type: none"> • Chadwell St Mary Primary • East Tilbury Primary & Nursery • The Gateway Primary Free • Herringham Primary Academy • Lansdowne Primary Academy • St Mary's Catholic Primary • Tilbury Pioneer Academy • Woodside Academy 	<p style="text-align: center;">Corringham and Stanford-Le-Hope</p> <ul style="list-style-type: none"> • Abbots Hall Primary Academy • Arthur Bugler Primary • Corringham Primary • Giffards Primary • Graham James Primary Academy • St Joseph's Catholic Primary • Stanford-le-Hope Primary
<p style="text-align: center;">Rural areas</p> <ul style="list-style-type: none"> • Bulphan C of E Primary • Horndon on the Hill C of E Primary • Orsett C of E Primary 	

The planning areas for the Primary phase are shown on the map in Annex 5. The Primary phase forecast whole school summary is shown in Annex 7. The Primary Reception summary forecast is shown in Annex 8.

The Secondary planning areas are detailed in the table below:-

Secondary Planning Areas

<p style="text-align: center;">West</p> <ul style="list-style-type: none">• The Ockendon Academy• Ormiston Park Academy	<p style="text-align: center;">Central</p> <ul style="list-style-type: none">• The Gateway Academy• Grays Convent High School• The Hathaway Academy• Harris Academy Chafford Hundred• William Edwards School
<p style="text-align: center;">East</p> <ul style="list-style-type: none">• Gable Hall School• Hassenbrook Academy• St Clere's School	

The planning areas for the Secondary phase are shown on the map in Annex 6.

The Secondary phase whole school summary forecast is shown in Annex 9.

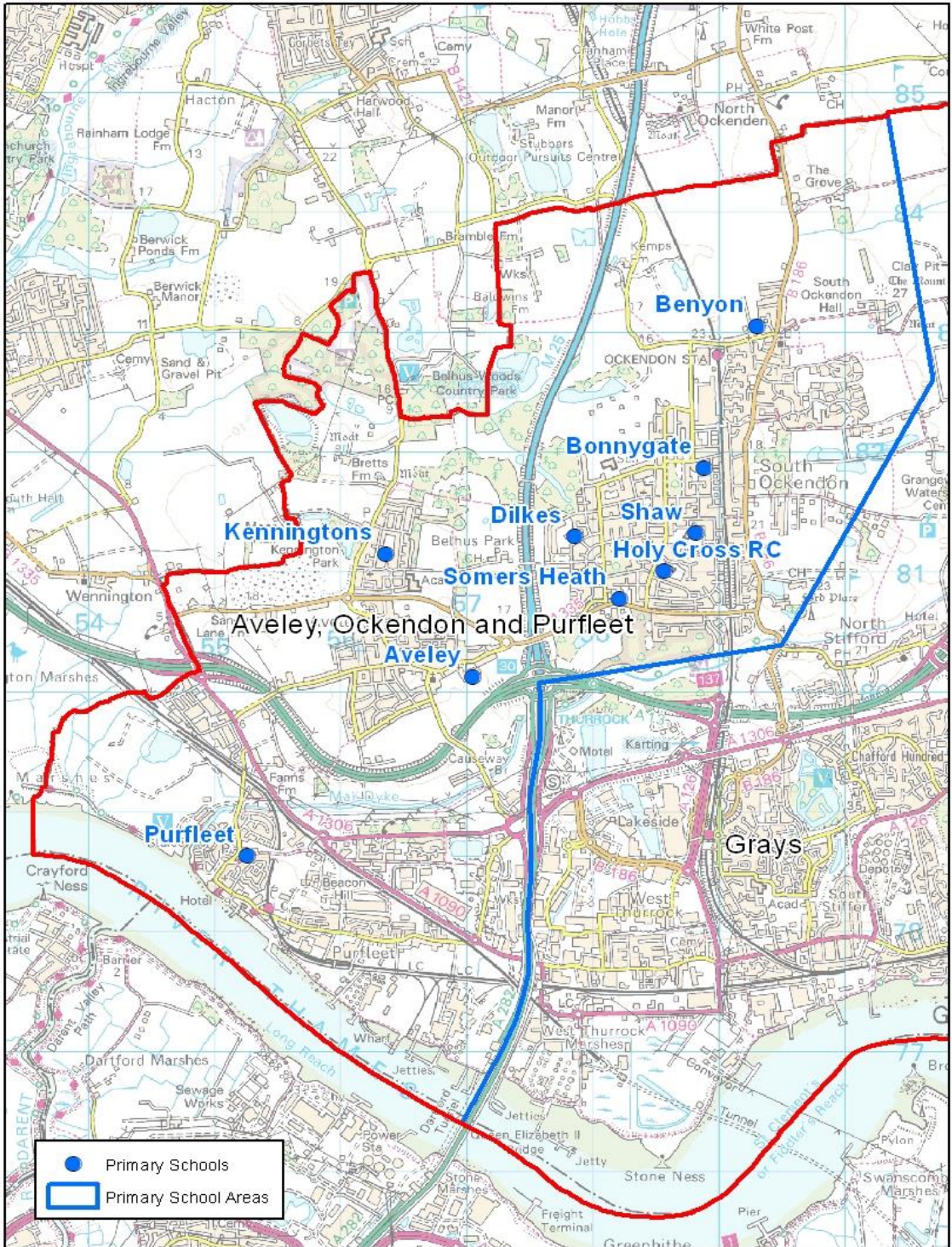
The Secondary Year 7 summary forecast is shown in Annex 10.

PRIMARY FORECASTS

Pupil place projections for each of the revised planning areas are set out in the following pages.

The whole school projections for each primary school planning area have been calculated using birth data which is projected to calculate reception numbers along with the actual number of children on roll in the schools in the October 2015 census, adding the pupil yield from housing developments and then adding an additional element of places to cater for in-year admissions. This degree of additional places is required to enable schools to absorb the number of pupils we anticipate will arrive in Thurrock from elsewhere in the UK and abroad in the September 2016/17 academic year and beyond. It also allows a margin to facilitate a degree of parental preference. The impact of inward migration will be closely monitored and forecasts adjusted accordingly.

Full details of the methodology used to determine the pupil place forecasts for the primary phase are set out in Annex 1.



© Crown copyright and database rights 2015 Ordnance Survey 100025457

Scale 1:55,000

Aveley, Ockendon & Purfleet

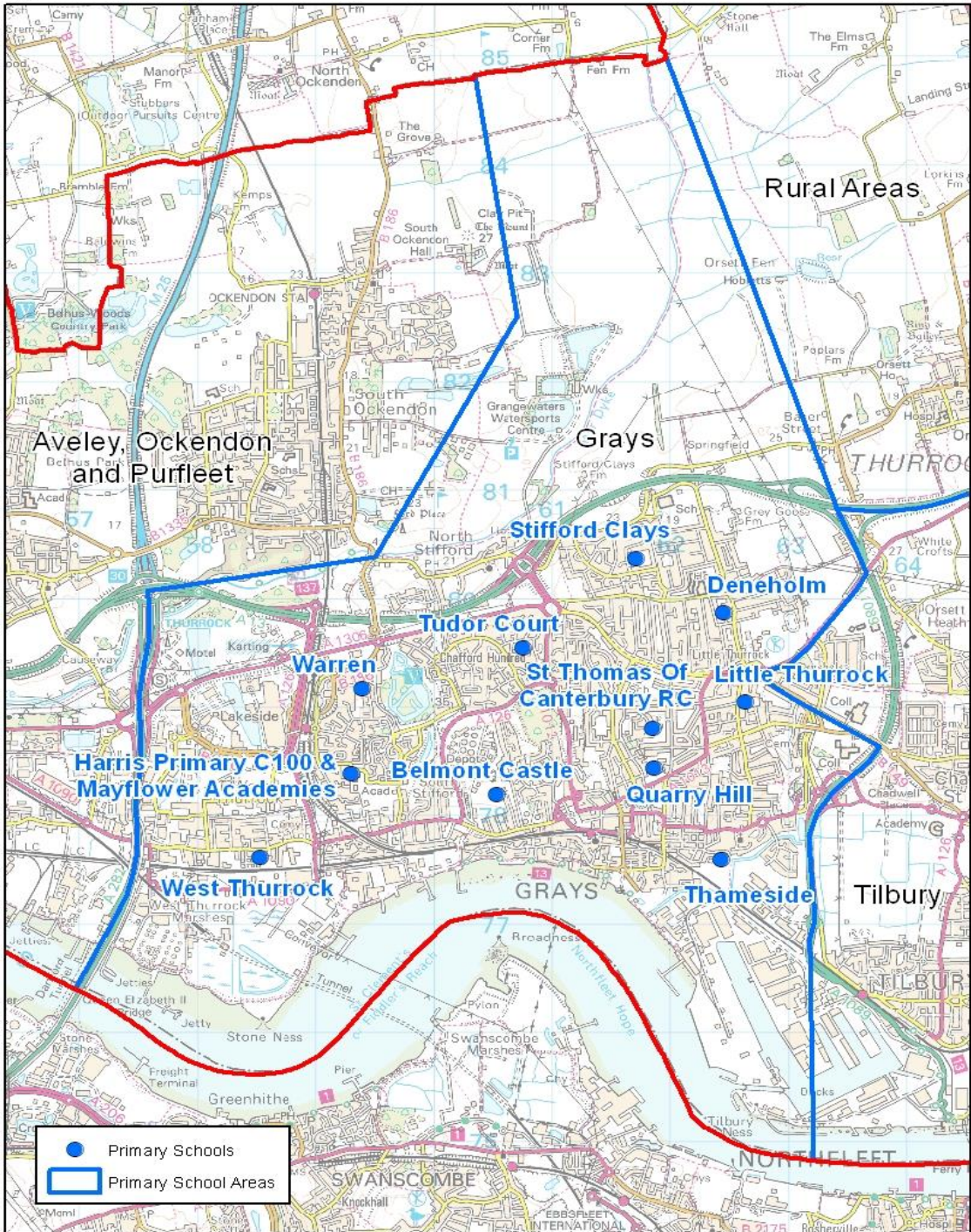
N.B. Published Admission Number (PAN)

Aveley, Ockendon & Purfleet		WHOLE SCHOOL FORECAST				
School	PAN	Sep-16	Sep-17	Sep-18	Sep-19	Sep-20
Aveley	420	422	422	413	415	414
Benyon	210	217	204	204	216	218
Bonnygate	420	388	445	475	487	475
Dilkes	420	416	428	428	433	436
Holy Cross	315	275	277	278	281	284
Kenningtons	420	456	504	523	512	530
Purfleet	630	485	507	528	552	555
Shaw	420	400	401	395	396	392
Somers Heath	420	248	251	249	254	248
In Year Admissions		231	241	245	248	249
	3,675	3,538	3,680	3,738	3,794	3,801

Aveley, Ockendon & Purfleet		RECEPTION FORECAST				
School	PAN	Sep-16	Sep-17	Sep-18	Sep-19	Sep-20
Aveley	60	54	60	60	61	59
Benyon	30	37	26	31	32	32
Bonnygate	60	59	73	85	68	71
Dilkes	60	55	73	62	63	63
Holy Cross	45	45	45	45	45	45
Kenningtons	60	79	75	79	80	78
Purfleet	90	85	73	75	81	79
Shaw	60	51	61	54	56	56
Somers Heath	60	38	34	28	34	34
In Year Admissions		35	36	36	36	36
	525	538	556	555	556	553

The above forecasts include the child yield from proposed developments at: Aveley Football Ground, Mill Road, Former Ford Factory, Arisdale Avenue, Green Plus Ltd - Arisdale Avenue and Aveley Village Extension south of B1335.

Holy Cross will reduce its PAN to 210 from September 2017, Somersheath school will increase by 210 places becoming a 2FE school in September 2016.



Grays

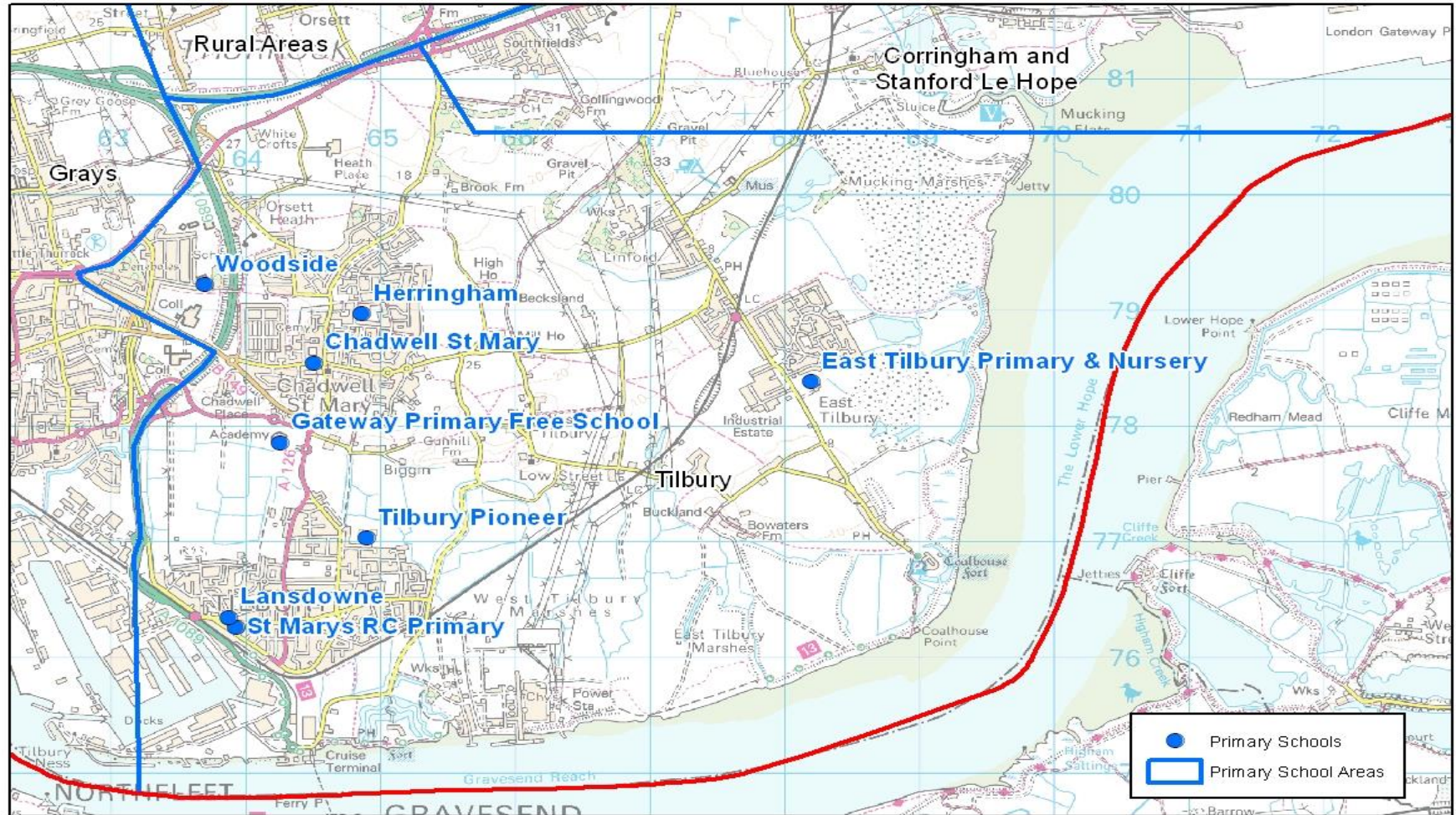
Grays		WHOLE SCHOOL FORECAST				
School	PAN	Sep-16	Sep-17	Sep-18	Sep-19	Sep-20
Belmont Castle	630	716	704	673	641	644
Deneholm	420	408	434	440	446	453
Harris Chafford Hundred	630	609	592	559	538	517
Harris Mayflower	1,050	256	346	436	526	616
Little Thurrock	630	630	642	629	633	634
Quarry Hill	420	511	512	491	475	460
St Thomas'	630	625	625	626	627	627
Stifford Clays	630	708	724	754	747	741
Thameside	840	658	673	667	682	678
Tudor Court	840	806	825	804	794	784
Warren	420	440	435	422	422	420
West Thurrock	420	560	607	561	563	563
In Year Admissions		485	498	494	497	493
	7,560	7,412	7,617	7,556	7,591	7,630

Grays		RECEPTION FORECAST				
School	PAN	Sep-16	Sep-17	Sep-18	Sep-19	Sep-20
Belmont Castle	90	102	90	87	92	93
Deneholm	60	54	84	66	65	67
Harris Chafford Hundred	90	74	74	57	66	68
Harris Mayflower	150	90	90	90	90	90
Little Thurrock	90	95	99	77	92	91
Quarry Hill	60	73	63	67	69	68
St Thomas'	90	90	90	90	90	90
Stifford Clays	90	108	110	120	109	112
Thameside	120	94	102	86	96	95
Tudor Court	120	117	111	99	108	109
Warren	60	64	57	59	60	60
West Thurrock	60	87	107	78	87	90
In Year Admissions		73	75	68	72	66
	1080	1,121	1,152	1,044	1,096	1,099

The above forecasts include child yield from proposed developments at: Land Part of Little Thurrock Marshes, Thurrock Park Way Tilbury Essex, Bannatyne's Health Club, Howard Road, Chafford Hundred, Former Factory Units, Schoolfield Road, and Land South of West Thurrock Way Lakeside.

Harris Mayflower will increase to a 5FE school from September 2016. They have been filling up from reception upwards since September 2014. Their intake for September 2014 and September 2015 has been 90 reception places in each of these years.

Thameside will increase to a 4FE school in September 2016.



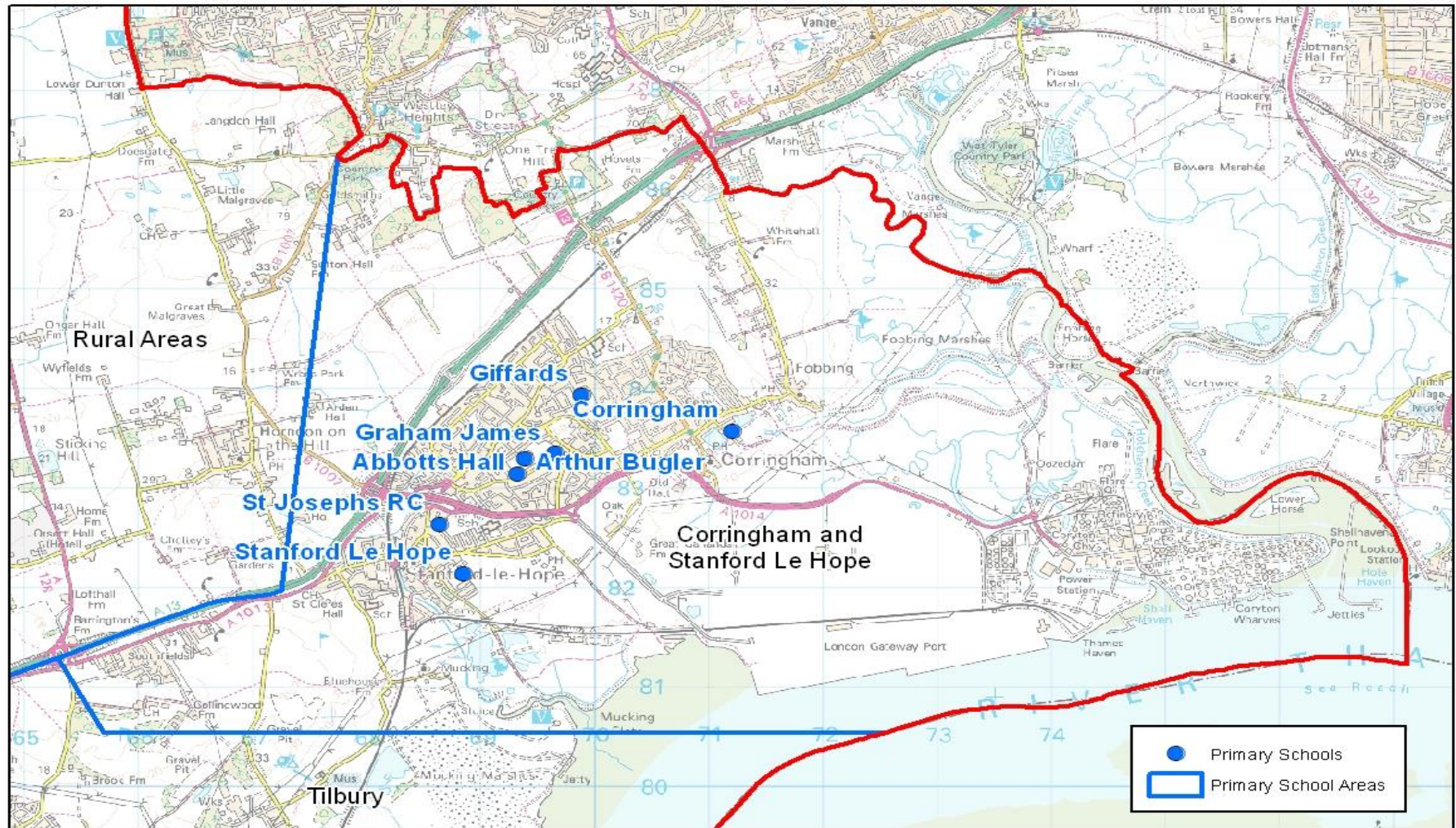
Tilbury

Tilbury		WHOLE SCHOOL FORECAST				
School	PAN	Sep-16	Sep-17	Sep-18	Sep-19	Sep-20
Chadwell St Mary	210	204	208	224	227	231
East Tilbury	630	598	623	597	577	565
Gateway	420	482	450	420	419	420
Herringham	420	413	411	407	404	402
Lansdowne	630	613	622	619	616	615
St Mary's	210	239	230	226	216	213
Tilbury Pioneer	420	268	313	353	349	347
Woodside	630	553	566	613	638	640
In Year Admissions		236	240	241	241	240
	3,570	3,606	3,663	3,700	3,687	3,673

Tilbury		RECEPTION FORECAST				
School	PAN	Sep-16	Sep-17	Sep-18	Sep-19	Sep-20
Chadwell St Mary	30	25	33	45	33	34
East Tilbury	90	91	77	68	78	79
Gateway	60	60	60	60	60	60
Herringham	60	58	55	58	57	57
Lansdowne	90	84	94	91	81	88
St Mary's	30	30	30	30	30	30
Tilbury Pioneer	90	62	45	40	49	49
Woodside	90	93	73	108	94	92
In Year Admissions		35	33	34	34	34
	540	538	500	534	516	523

The above forecasts include child yield from proposed developments at: Former St Chads School, St Chads Road.

Woodside Academy will increase to a 3FE school in September.

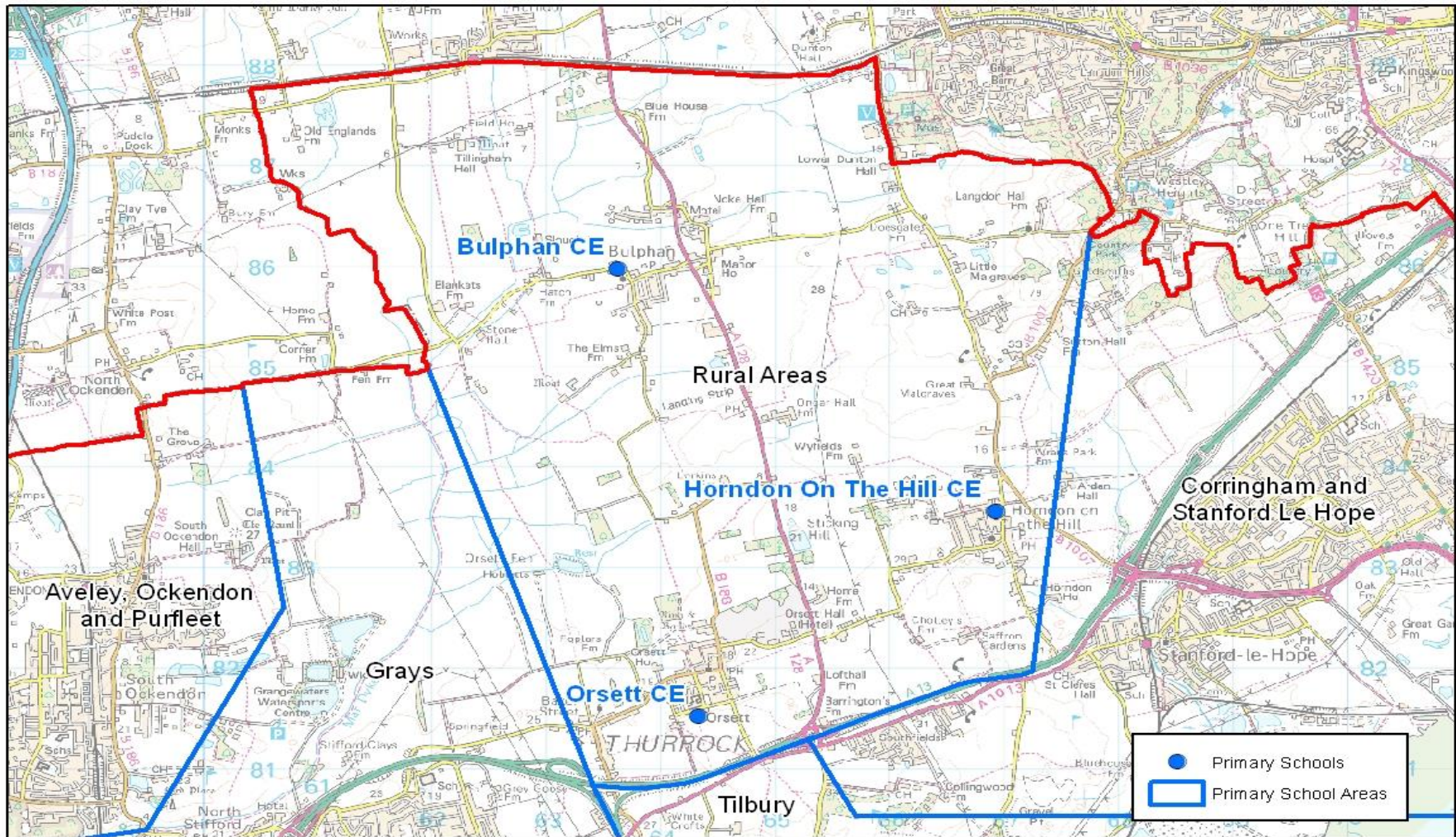


Corringham and Stanford Le Hope

Corringham & Stanford le Hope		WHOLE SCHOOL FORECAST				
School	PAN	Sep-16	Sep-17	Sep-18	Sep-19	Sep-20
Abbots Hall	210	209	201	197	194	190
Arthur Bugler	420	409	399	409	406	404
Corringham	420	409	401	402	402	399
Giffards	420	461	493	484	405	399
Graham James	420	317	323	316	320	306
St Joseph's	210	253	244	237	229	220
Stanford-le-Hope	420	357	363	349	344	335
In Year Admissions		169	170	168	161	155
	2,520	2,584	2,594	2,562	2,461	2,408

Corringham & Stanford le Hope		RECEPTION FORECAST				
School	PAN	Sep-16	Sep-17	Sep-18	Sep-19	Sep-20
Abbots Hall	30	28	23	26	27	26
Arthur Bugler	60	50	51	70	58	57
Corringham	60	50	50	66	60	57
Giffards	60	60	49	53	55	54
Graham James	60	34	37	36	42	37
St Joseph's	30	30	30	30	30	30
Stanford-le-Hope	60	46	44	58	49	49
In Year Admissions		21	20	24	22	19
	360	319	304	363	343	329

The above forecasts include child yield from proposed developments at:
 Land Adjacent A13 Railway Line And Southend Road, Land Adjacent To The
 Railway Line, Manorway & West of Victoria Street.



Rural Area

Rural		WHOLE SCHOOL FORECAST				
School	PAN	Sep-16	Sep-17	Sep-18	Sep-19	Sep-20
Bulphan	84	102	101	94	89	85
Horndon-on-the-Hill	210	197	189	194	190	191
Orsett	210	221	204	189	184	177
In Year Admissions		36	35	33	32	32
	504	556	529	510	495	485

Rural		RECEPTION FORECAST				
School	PAN	Sep-16	Sep-17	Sep-18	Sep-19	Sep-20
Bulphan	12	12	12	12	12	12
Horndon-on-the-Hill	30	27	21	32	27	27
Orsett	30	37	14	17	25	23
In Year Admissions		5	3	4	4	4
	72	81	50	65	68	66

The above forecasts include child yield from proposed developments at: Tylands Farm, South Hill, Langdon Hills and Land Adjacent to Thatched Cottage Baker Street.

The live birth data for this planning area indicates that there will be a small shortfall in Reception places in September 2016. It is expected that any excess demand will be met in other planning areas.

Primary Forecast Summary

The pressure in the primary phase is being managed and will continue to be regularly monitored closely. The inward migration experienced in recent years appears to have had a more significant impact on primary places than secondary places. This may be because we have had surplus places in our secondary schools which could absorb the newcomers or it may be that the families arriving in Thurrock have younger children.

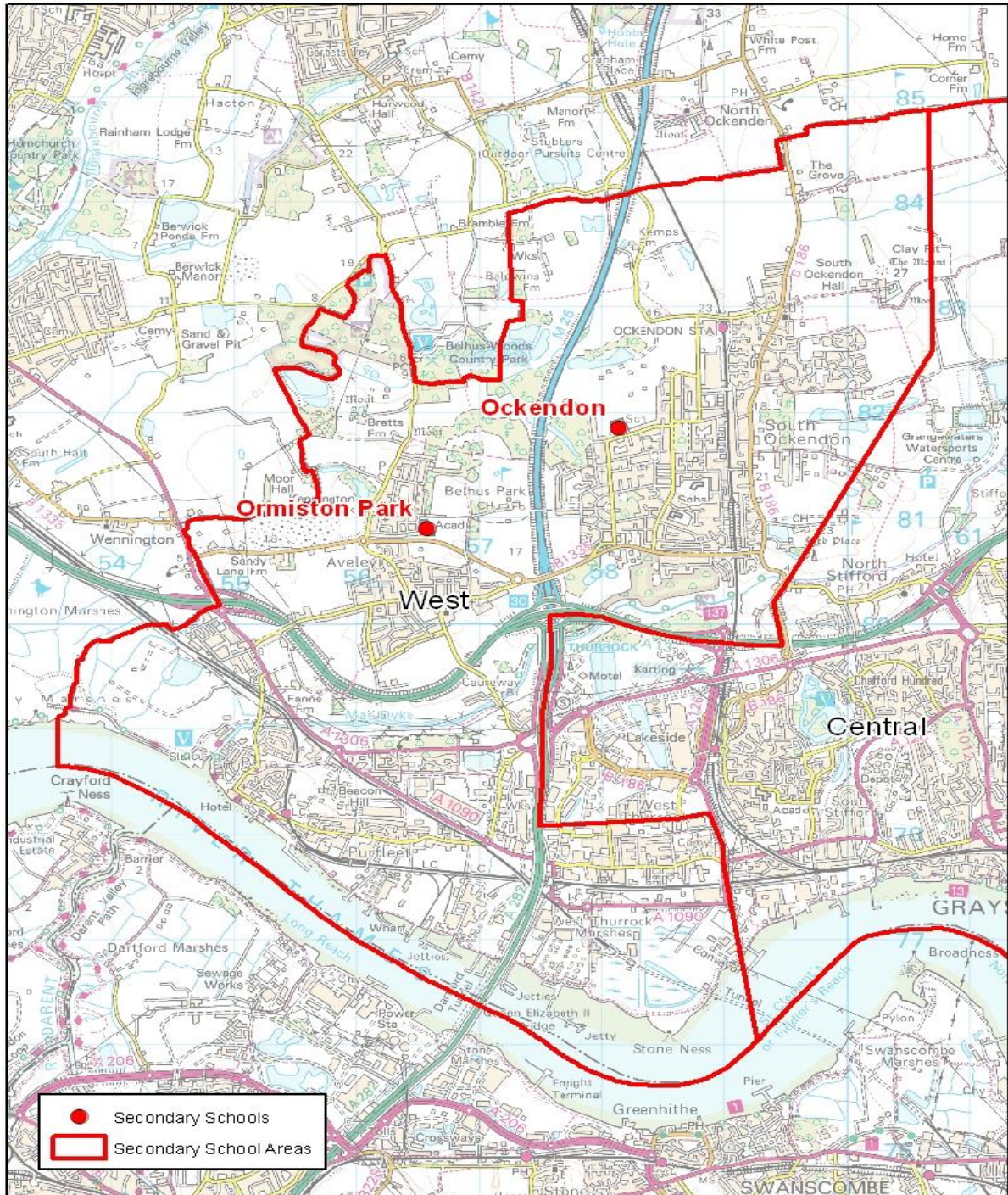
The ONS 2011 census data demonstrates that Thurrock has a significant population under 19 years. The largest percentage of the adult population is of child bearing age and therefore it is unlikely that the demand for school places will reduce in the near future.

The Council will continue to monitor the impact of inward migration in order to respond to changing circumstances.

Future additional places will almost certainly be required across the Local Authority.

SECONDARY FORECASTS

Whole school forecasts for each secondary planning area has been calculated using formulae to calculate transition rate from year 6 to year 7 and the current numbers on roll in schools on the census data from October 2015 and by also adding the pupil yield from any developments. An additional element has been added in to allow for in-year admissions.



© Crown copyright and database rights 2015 Ordnance Survey 100025457

Scale 1:60,000

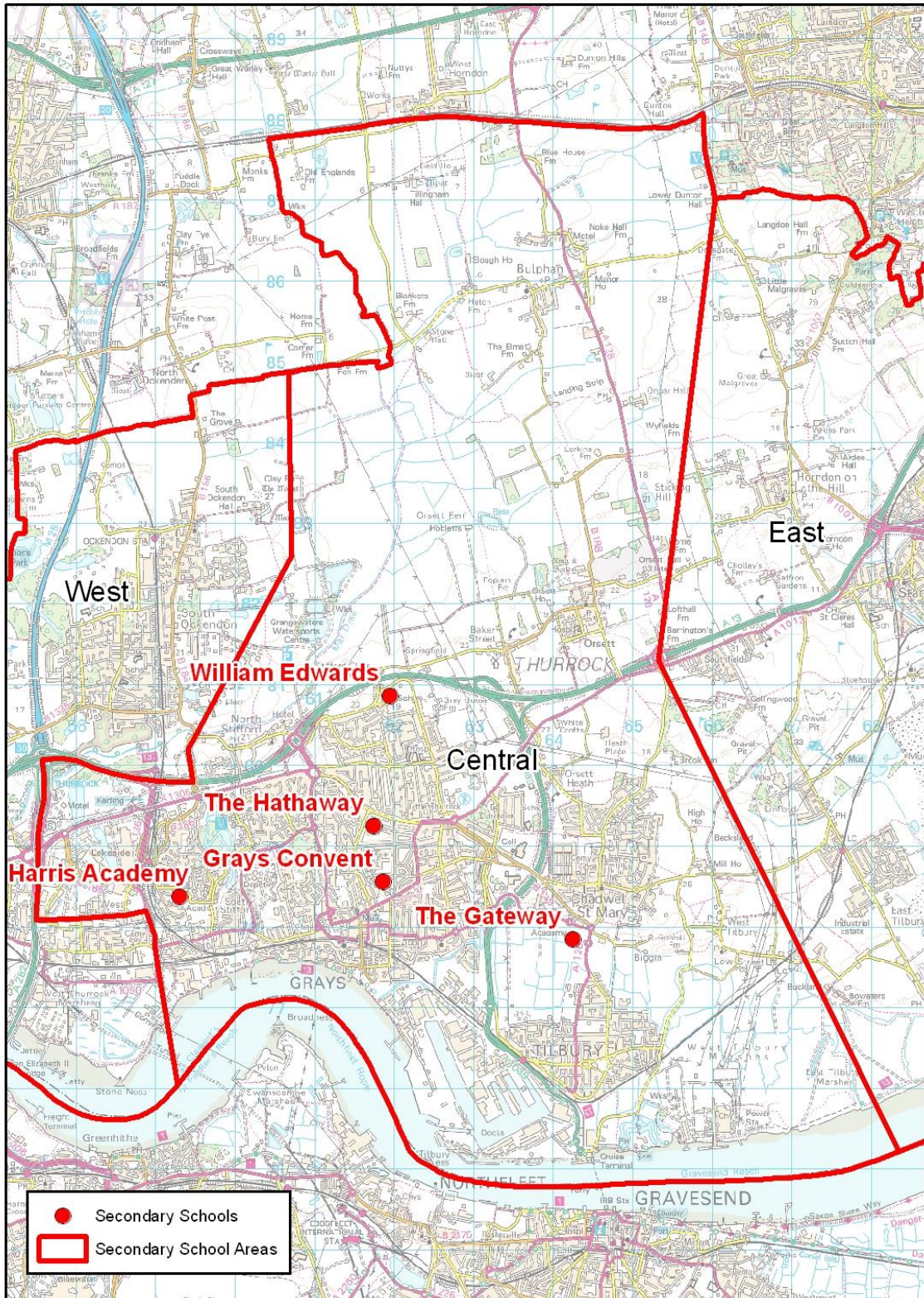
West Planning Area

West Planning Area	WHOLE SCHOOL FORECAST					
School	PAN	Sep-16	Sep-17	Sep-18	Sep-19	Sep-20
Ormiston Park Academy	900	491	531	545	540	556
The Ockendon Academy	990	1,094	1,136	1,196	1,249	1,287
In Year Admissions		109	114	121	125	129
	1,890	1,694	1,781	1,862	1,914	1,972

West Planning Area	YEAR 7 FORECAST					
School	PAN	Sep-16	Sep-17	Sep-18	Sep-19	Sep-20
Ormiston Park Academy	180	138	142	132	115	118
The Ockendon Academy	210	243	238	266	266	274
In Year Admissions		24	24	27	27	27
	390	405	404	425	408	419

The above forecasts include child yield from developments including those proposed at: Former Factory Units, Schoolfield Road, Land South of West Thurrock Way Lakeside, Aveley Football Ground, Mill Road and Aveley Village Extension south of B1335.

The Year 7 forecast for The Ockendon Academy indicates that there are more potential applicants in the catchment area than the school's Planned Admission Number can accommodate. However, there will be places available at Ormiston Park Academy to meet the need for Year 7 places in this planning area in September 2015 and beyond.



Central Planning Area

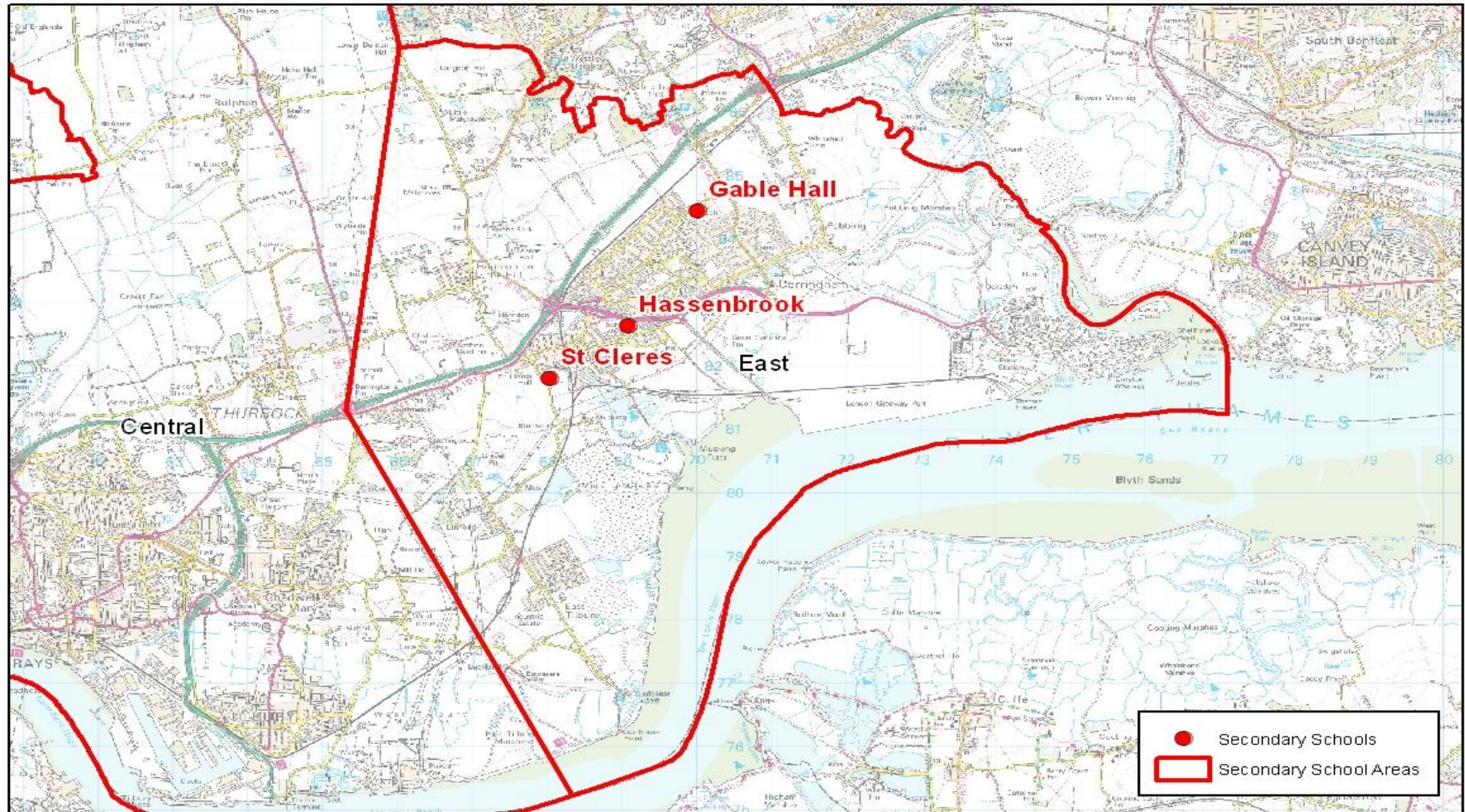
Central Planning Area	WHOLE SCHOOL FORECAST					
School	PAN	Sep-16	Sep-17	Sep-18	Sep-19	Sep-20
Grays Convent	620	531	536	582	614	633
Harris Academy Chafford Hundred	900	930	930	948	973	1,002
The Gateway Academy	1,020	1,024	1,066	1,099	1,121	1,155
The Hathaway Academy	900	738	794	887	946	975
William Edwards	1,210	1,221	1,232	1,254	1,270	1,308
In Year Admissions		309	317	333	345	355
	4,650	4,753	4,875	5,103	5,269	5,428

Central Planning Area	YEAR 7 FORECAST					
School	PAN	Sep-16	Sep-17	Sep-18	Sep-19	Sep-20
Grays Convent	124	119	117	131	131	135
Harris Academy Chafford Hundred	180	196	192	207	208	213
The Gateway Academy	210	222	219	246	239	246
The Hathaway Academy	180	194	195	216	202	208
William Edwards	250	257	255	273	271	278
In Year Admissions		67	66	73	74	76
	944	1,055	1,044	1,146	1,125	1,156

The forecasts above include child yield from proposed developments including those at: Bannatyne's Health Club, Howard Road, Chafford Hundred, Star Industrial Estate, Linford Road, Chadwell St Mary, South East Essex College, Wood View Grays, Grays Gas Holder Site, Land Part of Little Thurrock Marshes, Thurrock Park Way Tilbury Essex, Little Malgraves Farm, Lower Dunton Road, Bulphan.

William Edwards have increased their intake by 10 pupils for September 2016.

Harris Academy Trust continues to pursue a site for a new secondary school with the intention of opening in September 2017.



East Planning Area

East Planning Area	WHOLE SCHOOL FORECAST					
School	PAN	Sep-16	Sep-17	Sep-18	Sep-19	Sep-20
Gable Hall	1,270	1,328	1,386	1,443	1,460	1,504
Hassenbrook Academy	550	475	492	536	587	605
St Clere's	1,065	1,138	1,177	1,221	1,237	1,274
In Year Admissions		203	209	220	230	237
	2,885	3,144	3,264	3,420	3,514	3,620

East Planning Area	YEAR 7 FORECAST					
School	PAN	Sep-16	Sep-17	Sep-18	Sep-19	Sep-20
Gable Hall	272	303	318	352	311	320
Hassenbrook Academy	110	114	112	125	125	129
St Clere's	231	260	263	276	264	271
In Year Admissions		45	44	49	49	50
	613	722	737	802	749	770

The forecast for the East Planning Area include child yield from developments at: Land Adjacent A13 Railway Line And Southend Road, Land Adjacent to the Railway Line, Manorway & West of Victoria Street, Bata Land Adj. Bata Avenue, East Tilbury and Land at St Cleres Golf Club.

Secondary Forecast Summary

The demand for secondary places is increasing and will continue to do so over the next few years. Thurrock Council are detailed discussion with the DfE on how this shortfall of places can be met. There will be further discussion held with secondary schools and academies over the forthcoming months. Sufficient places will be available for September 2016 intake.

AUTHORITY WIDE ISSUES

The main factor for pupil increases in both the primary and secondary phases are the in-year admissions. The table below details the increases of in-year admissions outside the normal admission rounds.

Academic Year	No. of children requiring a primary school place outside of the normal admission round who arrived in Thurrock from abroad. "In Year Admissions"	No. of children requiring a primary school place outside of the normal admission round who arrived in Thurrock from elsewhere in the UK. "In Year Admissions"	Total
2012/13	181	455	636
2013/14	189	585	774
2014/15	242	698	940
2015/16*	136	432	568
* NB 2015/16 figures for months only.			

The figure for "In Year" applications from families arriving in the Authority for the 2015/16 academic year shown above was accurate in January 2016. However, it is possible that the final figure may surpass that for 2014/15.

Planning for the children arriving in Thurrock is difficult as we do not know who they are, how old they are, and therefore, which year groups they will apply for until they make contact with School Admissions. Some may require Reception and Year 7 places, but many will require places in other year groups. This introduces the potential of bulge classes in year groups other than Reception and Year 7 as we have experienced this year.

With the unpredictable demand for places from outside of Thurrock and additional element of pupil places has been added to each planning area within the Authority.

ANNEX 1: PUPIL PLACE FORECASTING METHODOLOGY

The statutory obligation for all Local Authorities is to provide sufficient school places. Thurrock Council regularly reviews all data, trends and builds a robust analysis of pupil planning to ensure a place for all pupils that live in Thurrock either at normal admission rounds or the unforeseen “in-year” admissions.

The unprecedented levels currently experienced for in-year admissions has put pressure on school places but with the excellent relationships we have with our schools and academies, Thurrock Council has been able to meet these pressures.

Primary Forecasts

Thurrock Council uses live birth data provided by the health service which forms the basis of calculating the place requirements four years later. This data contains post codes where the child lives which are then allocated to a school in that area to calculate places required in that schools planning area.

Whole school forecasts are based on pupil census data, this provides actual pupil numbers in each year group. The number of children calculated from any building development is added to this to then calculate the number of school places required. An element of additional places is then added to cater for in-year admissions.

The building developments that are taken into consideration in this edition of the PPP document are listed under each planning area.

There is a project team made up of officers from various departments in the authority that play a part in PPP that meet up every two weeks to review forecasts and any emerging issues. This allows the Authority to be proactive in taking any necessary action to meet growing pressures for school places.

Secondary Forecasts

With the high level of primary school places we have we know that these will feed through to our secondary schools. When calculating year 7 forecasts we use existing primary numbers. Trend data shows us that we have an average transfer rate of 92%, meaning 8% of our children go elsewhere, usually to neighbouring Authorities. Thurrock has no secondary provision for Catholic boys who tend to move out of the area to attend secondary school.

The Year 7 forecasts in this document were arrived at by examining the conversion rate from Year 6 to Year 7 for the last three years. This is the number of Thurrock Year 6 children who went on to become Year 7 students.

Having established the predicted number of Year 7 students for each school, we then addressed the child yield from housing development.

We know the predicted number of children in each area that are likely to arise from developments but we cannot know how old they will be or which year group they will require. We therefore assume that some of the children generated by new developments will require primary places and some secondary places.

A number of places are therefore added to the whole school predictions for both primary and secondary at the schools in the areas where the development is due to take place. If a major development falls between two or more schools the child yield is divided between the schools.

Migration

In recent years Thurrock has experienced an increase in the number of children applying for a school place "In Year". These arrivals during the academic year are difficult to manage as we do not know how many of each age group will arrive. The extent of inward migration in recent years indicates that 6% of school places are required in the primary phase to ensure that the new arrivals can be accommodated. It is not clear if the same extent of provision is required in the secondary sector.

The forecasts are not constrained by the physical accommodation available in the schools in the planning area and therefore indicate where pressure on places is likely to arise.

Pupil Migration

Thurrock is a net exporter of pupils. The numbers both in and out of the Local Authority for receptions and year 7 are listed below. The percentages listed are comparing these numbers against September 2015 actual numbers for reception & Year 7.

These numbers just relate to the normal admission round.

Primary

8 children are expected to come in to the LA +0.33% by September 2016

62 children expected to go outside of the LA -2.6% by September 2016

Secondary

62 children are expected to come in to the LA +3.3% by September 2016

299 children are expected to go outside of the LA - 5.82% by September 2016

ANNEX 2: SPECIAL AND ADDITIONAL NEEDS

In September 2014 Education, Health and Care Plans were introduced for children and young people aged 0 – 25. This is a new way of working to allow the identification of children and young people's needs, bringing together Education, Health and Social Care support into one plan. It is based on a more family focused approach with a stress on the individual goals for children, improving their opportunities for education and employment.

For children who currently have a statement of special educational needs, their statement and support will remain in place until it is converted to an Education, Health and Care Plan. The Local Authority has until April 2018 to convert all statements to EHCPs. The SEN service will work with families to transfer the statement according to the Transition Plan which can be found on the website.

Further information on the new Education, Health and Care Plans can be obtained from the Council's website www.askthurrock.org.uk/kb5/thurrock.

Provision

The Council has two schools for children who have special needs and are unable to achieve their potential in a mainstream setting.

School	Status	Needs Met	Age Range	Number of Places
Beacon Hill Academy	Academy	Severe and profound learning difficulties	3 to 19	72
Treetops School		Moderate learning difficulties and Autism	3 to 19	276

Beacon Hill Post 16 Unit caters for students with severe and profound and multiple learning difficulties from 16 to 19. The Unit is located on the site of Treetops School in Grays. Students follow a personalised, accredited curriculum which promotes independence and transition to lifelong learning in the community.

Treetops is a day special school for pupils between the ages of 3 and 19. The school caters for children and young people with moderate learning difficulties and autism. The school is located in Grays and is an Authority maintained school.

In addition there are a number of mainstream schools with specialist provision in the Primary Sector:

School	Type of Provision	Age Range	Number of Places
Warren Primary	Resource base for pupils with hearing impairment	4-11	14
Stanford Le Hope Primary Academy	Resource base for pupils with visual impairment	4-11	5
Corringham Primary Academy	Resource base for pupils with speech and language difficulties	4-11	20
Harris Primary Academy	ICAN resource base for children with speech, language and communication needs	Nursery age	5FTE
Dilkes Primary Academy	Resource base for pupils with behavioural, emotional and social difficulties	4-11	10
Lansdowne Primary Academy	Resource base for pupils with social communication/moderate learning difficulties	4-11	12

Secondary phase schools with specialist provision are:

School	Type of Provision	Age Range	Number of Places
Ormiston Park Academy	ASCEND unit (BESD)	11-19	15
Harris Academy Chafford Hundred	Resource Base for pupils with speech, language and communication impairment	11-19	20
St Clere's School	Resource Base for pupils with visual and hearing impairment.	11-19	6 in VI Unit 11 in HI

Support is offered to students with special needs post 16 years at Palmers Sixth Form College and South Essex College.

ANNEX 3: PROVISION FOR PUPILS OUT OF SCHOOL

The Olive Academy provides a broad curriculum to a diverse group of young people across three sites: The Phoenix Primary Centre, the Culver Secondary Centre, the Tuition Centre based at the Culver site and the Assessment Centre.

The service provides education for children and young people who have experienced difficulty learning for a variety of reasons. Each of our sites caters specifically for the identified needs of individual students aged between 5 years and 16 years.

The Academy also provides support to students in mainstream schools who experience difficulties and are at risk of exclusion.

Admission to the service is by referral only. All referrals are made via the Council's Access and Inclusion Officer. The service is currently supporting 119 students.

Further information on the Olive Academy can be obtained from the Council's website.

ANNEX 4: POST 16 PROVISION

The 2008 Education Act raised the age of participation for young people in England. Those born on or after 1st September 1997 must remain in some form of education or training until their 18th birthday. This may be:

- full time education at school or college,
- an apprenticeship or traineeship,
- part time education or training as well as being employed, self-employed or volunteering for 20 hours per week or more.

Thurrock Council works in partnership with schools and colleges and other providers to plan provision for post 16 education and training. Young people can pursue a wide range of both academic and vocational courses in a range of settings.

Four secondary schools in Thurrock currently offer post 16 education; Gable Hall, Hassenbrook and St Clere's schools form the Stanford and Corringham 6th Form consortium and between them provide a range of academic and vocational courses.

The Ockendon Academy Studio School and 6th form is a 14 to 19 school offering a range of academic qualifications in addition to work based training. Applications for work based training places in the Studio School should be made via the Council's school admissions team. There are currently 35 places in the Studio School and this number will increase in future.

The table below provides the number of students in Thurrock school 6th forms at October 2015. Stanford and Corringham 6th Form Gable Hall, Hassenbrook and St Clere's consortium.

Gov	School	12	13	14	Post-16 Total
CA	Gable Hall	75	116		191
VA	Grays Convent				
CA	Harris Academy Chafford Hundred	171	119		290
CA	Hassenbrook Academy				
CA	Ormiston Park Academy	17	26	13	56
CA	St Clere's				
CA	The Gateway Academy				
CA	The Hathaway Academy				
CA	The Ockendon Academy	68	30		98
CA	William Edwards School				

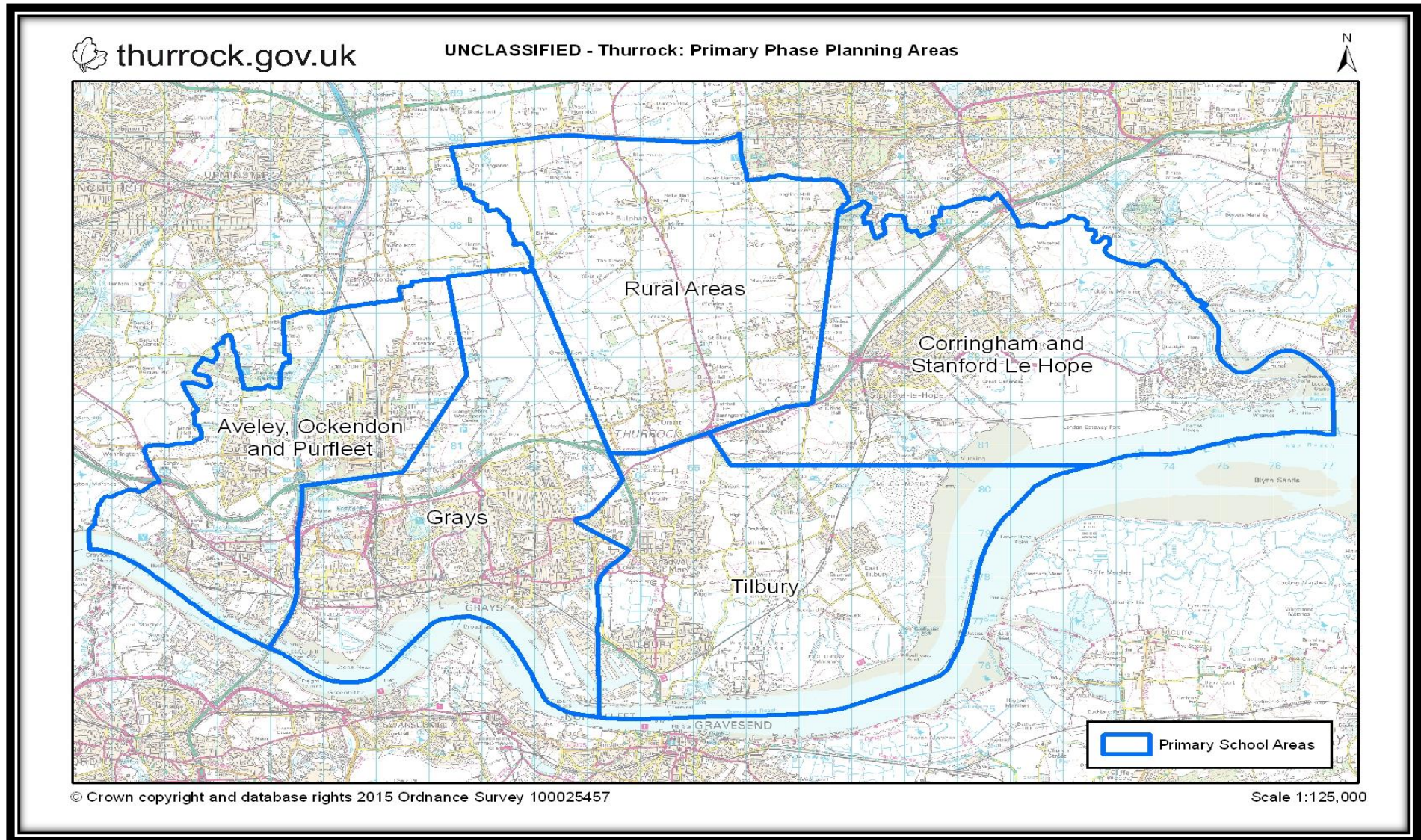
TOTALS	331	291	13	635
---------------	------------	------------	-----------	------------

Palmers College in Grays is a 6th form college and offers a range of A level, BTEC and secretarial courses to over 2000 students. Find out more about the courses on offer on the college website www.palmers.ac.uk

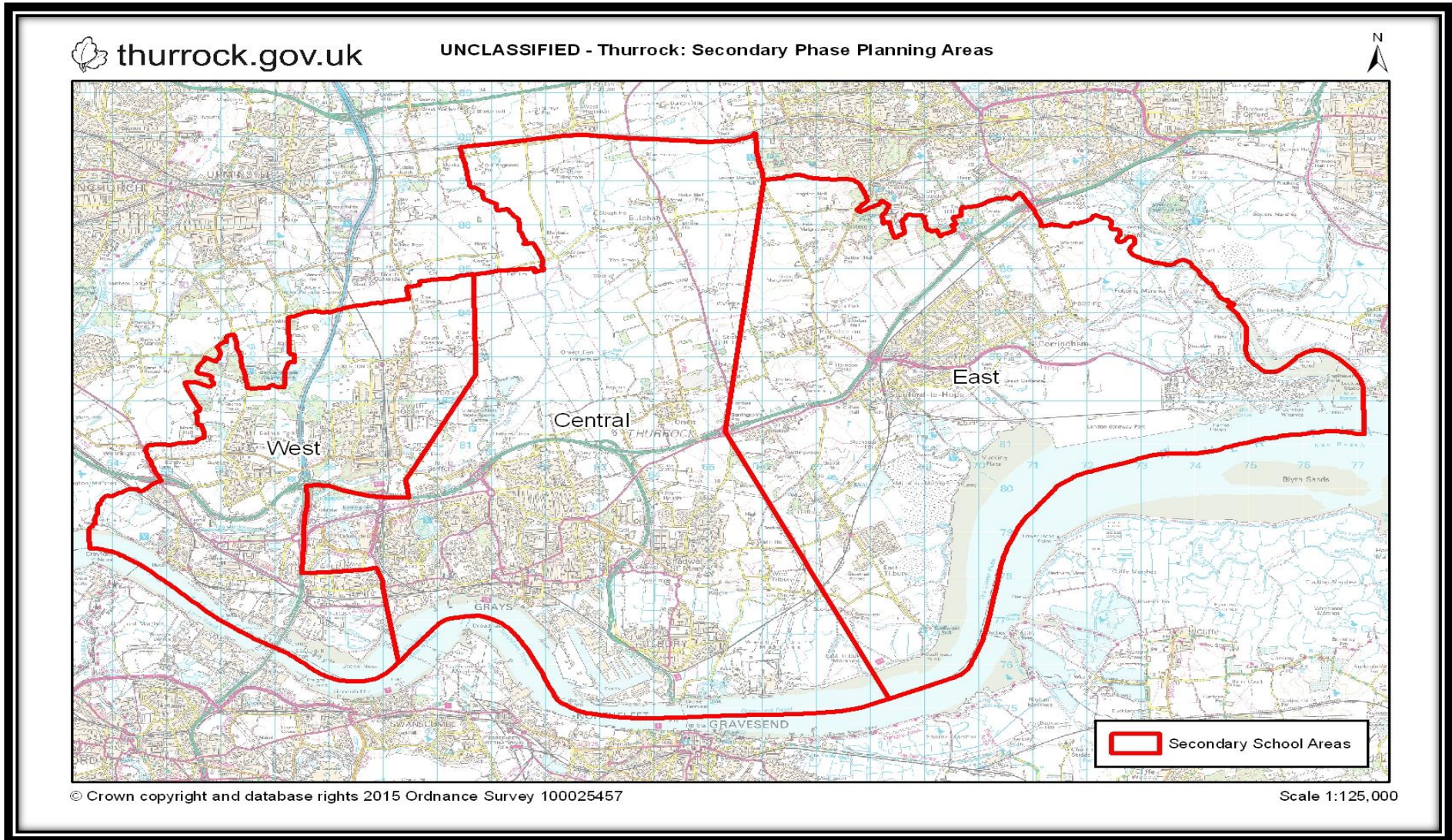
The recently opened South Essex College of Further and Higher Education in Grays offers a wide range of training opportunities which lead to accredited qualifications. Young people can study anything from bricklaying to costume design.

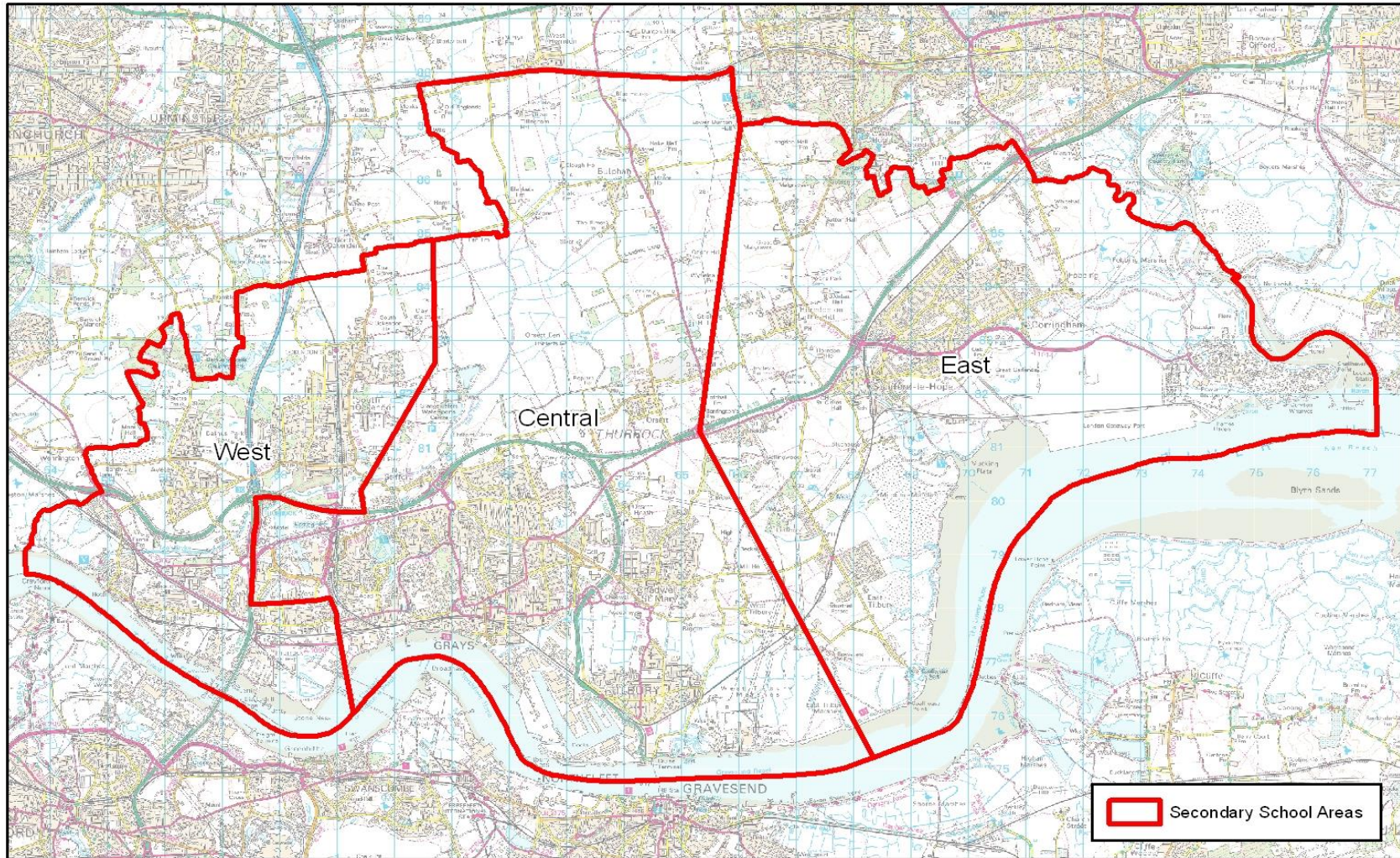
Full details on the opportunities available to Post 16 students can be found on the UCAS Progress website www.ucas.com.

ANNEX 5: MAP PRIMARY PHASE PLANNING AREAS



ANNEX 6: MAP SECONDARY PHASE PLANNING AREAS





ANNEX 7: PRIMARY FORECAST WHOLE SCHOOL

Aveley, Ockendon & Purfleet		WHOLE SCHOOL FORECAST				
School	PAN	Sep-16	Sep-17	Sep-18	Sep-19	Sep-20
Aveley	420	422	422	413	415	414
Benyon	210	217	204	204	216	218
Bonnygate	420	388	445	475	487	475
Dilkes	420	416	428	428	433	436
Holy Cross	315	275	277	278	281	284
Kenningtons	420	456	504	523	512	530
Purfleet	630	485	507	528	552	555
Shaw	420	400	401	395	396	392
Somers Heath	420	248	251	249	254	248
In Year Admissions		231	241	245	248	249
	3,675	3,538	3,680	3,738	3,794	3,801
Grays		WHOLE SCHOOL FORECAST				
School	PAN	Sep-16	Sep-17	Sep-18	Sep-19	Sep-20
Belmont Castle	630	716	704	673	641	644
Deneholm	420	408	434	440	446	453
Harris Chafford Hundred	630	609	592	559	538	517
Harris Mayflower	1,050	256	346	436	526	616
Little Thurrock	630	630	642	629	633	634
Quarry Hill	420	511	512	491	475	460
St Thomas'	630	625	625	626	627	627
Stifford Clays	630	708	724	754	747	741
Thameside	840	658	673	667	682	678
Tudor Court	840	806	825	804	794	784
Warren	420	440	435	422	422	420
West Thurrock	420	560	607	561	563	563
In Year Admissions		485	498	494	497	493
	7,560	7,412	7,617	7,556	7,591	7,630
Tilbury		WHOLE SCHOOL FORECAST				
School	PAN	Sep-16	Sep-17	Sep-18	Sep-19	Sep-20
Chadwell St Mary	210	204	208	224	227	231
East Tilbury	630	598	623	597	577	565
Gateway	420	482	450	420	419	420
Herringham	420	413	411	407	404	402
Lansdowne	630	613	622	619	616	615
St Mary's	210	239	230	226	216	213
Tilbury Pioneer	420	268	313	353	349	347
Woodside	630	553	566	613	638	640
In Year Admissions		236	240	241	241	240
	3,570	3,606	3,663	3,700	3,687	3,673

PRIMARY FORECAST WHOLE SCHOOL CONTINUED

Corringham & Stanford le Hope		WHOLE SCHOOL FORECAST				
School	PAN	Sep-16	Sep-17	Sep-18	Sep-19	Sep-20
Abbots Hall	210	209	201	197	194	190
Arthur Bugler	420	409	399	409	406	404
Corringham	420	409	401	402	402	399
Giffards	420	461	493	484	405	399
Graham James	420	317	323	316	320	306
St Joseph's	210	253	244	237	229	220
Stanford-le-Hope	420	357	363	349	344	335
In Year Admissions		169	170	168	161	155
	2,520	2,584	2,594	2,562	2,461	2,408
Rural		WHOLE SCHOOL FORECAST				
School	PAN	Sep-16	Sep-17	Sep-18	Sep-19	Sep-20
Bulphan	84	102	101	94	89	85
Horndon-on-the-Hill	210	197	189	194	190	191
Orsett	210	221	204	189	184	177
In Year Admissions		36	35	33	32	32
	504	556	529	510	495	485

ANNEX 8: PRIMARY FORECAST RECEPTION

Aveley, Ockendon & Purfleet		RECEPTION FORECAST				
School	PAN	Sep-16	Sep-17	Sep-18	Sep-19	Sep-20
Aveley	60	54	60	60	61	59
Benyon	30	37	26	31	32	32
Bonnygate	60	59	73	85	68	71
Dilkes	60	55	73	62	63	63
Holy Cross	45	45	45	45	45	45
Kenningtons	60	79	75	79	80	78
Purfleet	90	85	73	75	81	79
Shaw	60	51	61	54	56	56
Somers Heath	60	38	34	28	34	34
In Year Admissions		35	36	36	36	36
	525	538	556	555	556	553
Grays		RECEPTION FORECAST				
School	PAN	Sep-16	Sep-17	Sep-18	Sep-19	Sep-20
Belmont Castle	90	102	90	87	92	93
Deneholm	60	54	84	66	65	67
Harris Chafford Hundred	90	74	74	57	66	68
Harris Mayflower	150	90	90	90	90	90
Little Thurrock	90	95	99	77	92	91
Quarry Hill	60	73	63	67	69	68
St Thomas'	90	90	90	90	90	90
Stifford Clays	90	108	110	120	109	112
Thameside	120	94	102	86	96	95
Tudor Court	120	117	111	99	108	109
Warren	60	64	57	59	60	60
West Thurrock	60	87	107	78	87	90
In Year Admissions		73	75	68	72	66
	1080	1,121	1,152	1,044	1,096	1,099
Tilbury		RECEPTION FORECAST				
School	PAN	Sep-16	Sep-17	Sep-18	Sep-19	Sep-20
Chadwell St Mary	30	25	33	45	33	34
East Tilbury	90	91	77	68	78	79
Gateway	60	60	60	60	60	60
Herringham	60	58	55	58	57	57
Lansdowne	90	84	94	91	81	88
St Mary's	30	30	30	30	30	30
Tilbury Pioneer	90	62	45	40	49	49
Woodside	90	93	73	108	94	92
In Year Admissions		35	33	34	34	34
	540	538	500	534	516	523

PRIMARY FORECAST RECEPTION CONTINUED

Corringham & Stanford le Hope		RECEPTION FORECAST				
School	PAN	Sep-16	Sep-17	Sep-18	Sep-19	Sep-20
Abbots Hall	30	28	23	26	27	26
Arthur Bugler	60	50	51	70	58	57
Corringham	60	50	50	66	60	57
Giffards	60	60	49	53	55	54
Graham James	60	34	37	36	42	37
St Joseph's	30	30	30	30	30	30
Stanford-le-Hope	60	46	44	58	49	49
In Year Admissions		21	20	24	22	19
	360	319	304	363	343	329
Rural		RECEPTION FORECAST				
School	PAN	Sep-16	Sep-17	Sep-18	Sep-19	Sep-20
Bulphan	12	12	12	12	12	12
Horndon-on-the-Hill	30	27	21	32	27	27
Orsett	30	37	14	17	25	23
In Year Admissions		5	3	4	4	4
	72	81	50	65	68	66

TOTALS	PAN	Sep-16	Sep-17	Sep-18	Sep-19	Sep-20
PRIMARY NUMBERS	17,829	16,539	16,899	16,885	16,849	16,828
In Year Admissions		1,157	1,184	1,181	1,179	1,169
	17,829	17,696	18,083	18,066	18,028	17,997

ANNEX 9: SECONDARY FORECAST WHOLE SCHOOL

West Planning Area	WHOLE SCHOOL FORECAST					
School	PAN	Sep-16	Sep-17	Sep-18	Sep-19	Sep-20
Ormiston Park Academy	900	491	531	545	540	556
The Ockendon Academy	990	1,094	1,136	1,196	1,249	1,287
In Year Admissions		109	114	121	125	129
	1,890	1,694	1,781	1,862	1,914	1,972
Central Planning Area	WHOLE SCHOOL FORECAST					
School	PAN	Sep-16	Sep-17	Sep-18	Sep-19	Sep-20
Grays Convent	620	531	536	582	614	633
Harris Academy Chafford Hundred	900	930	930	948	973	1,002
The Gateway Academy	1,020	1,024	1,066	1,099	1,121	1,155
The Hathaway Academy	900	738	794	887	946	975
William Edwards	1,210	1,221	1,232	1,254	1,270	1,308
In Year Admissions		309	317	333	345	355
	4,650	4,753	4,875	5,103	5,269	5,428
East Planning Area	WHOLE SCHOOL FORECAST					
School	PAN	Sep-16	Sep-17	Sep-18	Sep-19	Sep-20
Gable Hall	1,270	1,328	1,386	1,443	1,460	1,504
Hassenbrook Academy	550	475	492	536	587	605
St Clere's	1,065	1,138	1,177	1,221	1,237	1,274
In Year Admissions		203	209	220	230	237
	2,885	3,144	3,264	3,420	3,514	3,620

ANNEX 10: SECONDARY FORECAST YEAR 7

West Planning Area	YEAR 7 FORECAST					
School	PAN	Sep-16	Sep-17	Sep-18	Sep-19	Sep-20
Ormiston Park Academy	180	138	142	132	115	118
The Ockendon Academy	210	243	238	266	266	274
In Year Admissions		24	24	27	27	27
	390	405	404	425	408	419
Central Planning Area	YEAR 7 FORECAST					
School	PAN	Sep-16	Sep-17	Sep-18	Sep-19	Sep-20
Grays Convent	124	119	117	131	131	135
Harris Academy Chafford Hundred	180	196	192	207	208	213
The Gateway Academy	210	222	219	246	239	246
The Hathaway Academy	180	194	195	216	202	208
William Edwards	250	257	255	273	271	278
In Year Admissions		67	66	73	74	76
	944	1,055	1,044	1,146	1,125	1,156
East Planning Area	YEAR 7 FORECAST					
School	PAN	Sep-16	Sep-17	Sep-18	Sep-19	Sep-20
Gable Hall	272	303	318	352	311	320
Hassenbrook Academy	110	114	112	125	125	129
St Clere's	231	260	263	276	264	271
In Year Admissions		45	44	49	49	50
	613	722	737	802	749	770

TOTALS	PAN	Sep-16	Sep-17	Sep-18	Sep-19	Sep-20
SECONDARY NUMBERS	9,425	8,970	9,280	9,711	9,997	10,299
In Year Admissions		621	640	674	700	721
	9,425	9,591	9,920	10,385	10,697	11,020